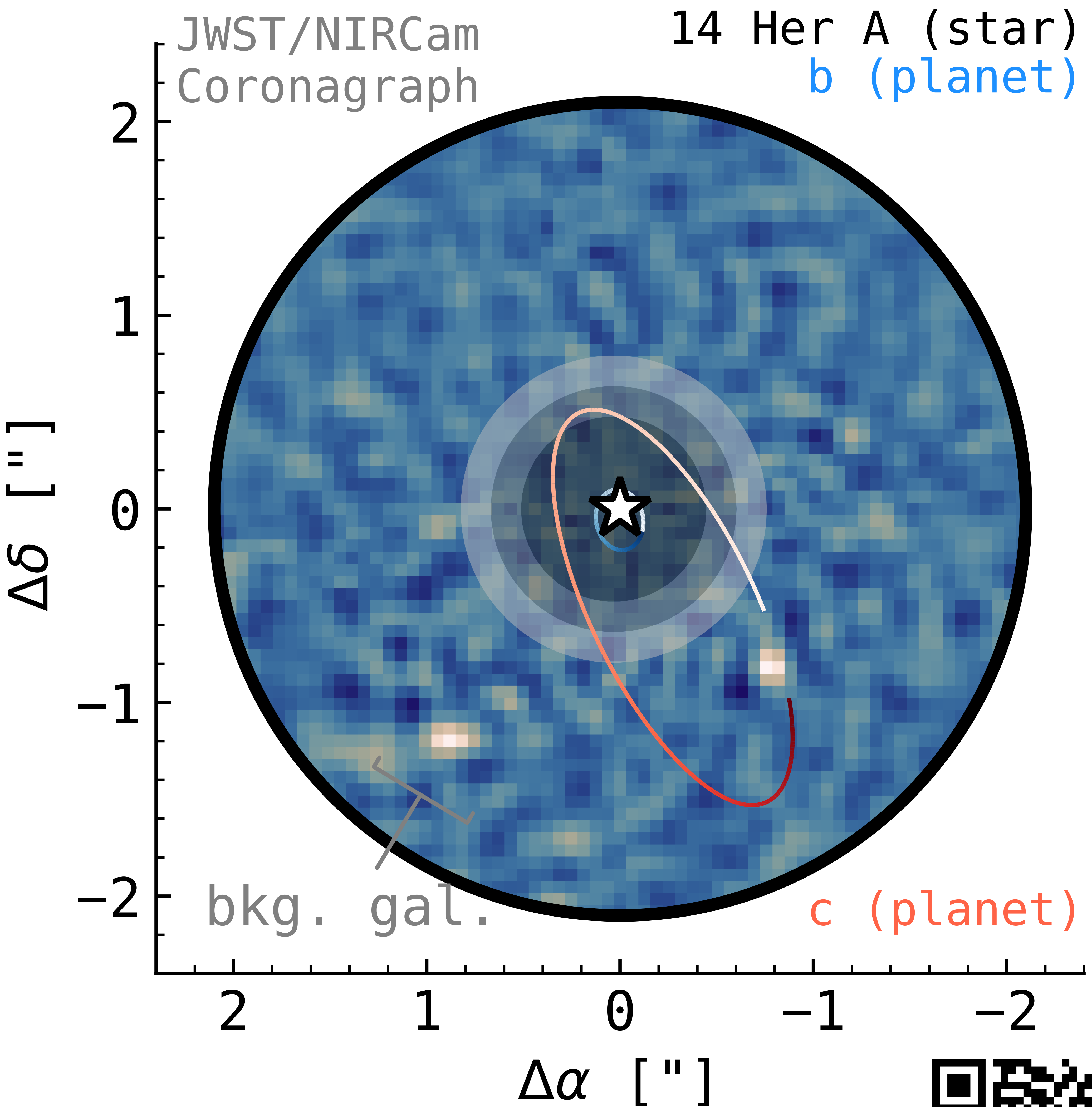


We have imaged a
275K exoplanet in the
thermal IR at $1''/10^{-6}$
with JWST/NIRCam



This system has a significant mutual inclination, with clear evidence from our latest orbit fits that the two planets are undergoing dramatic secular oscillations. The planet's F444W luminosity implies some combination of clouds and vertical mixing to suppress the flux from the anticipated value (based on the dynamical mass and system age) to our observed value. These atmospheric processes can be probed by follow-up mid-infrared observations. Scan the QR code to read the manuscript in ApJ Letters.



William Balmer (JHU/STScI, [wbalmer.github.io](https://github.com/wbalmer)), Daniella Bardalez-Gagliuffi (Amherst), Laurent Pueyo (STScI), and collaborators

