

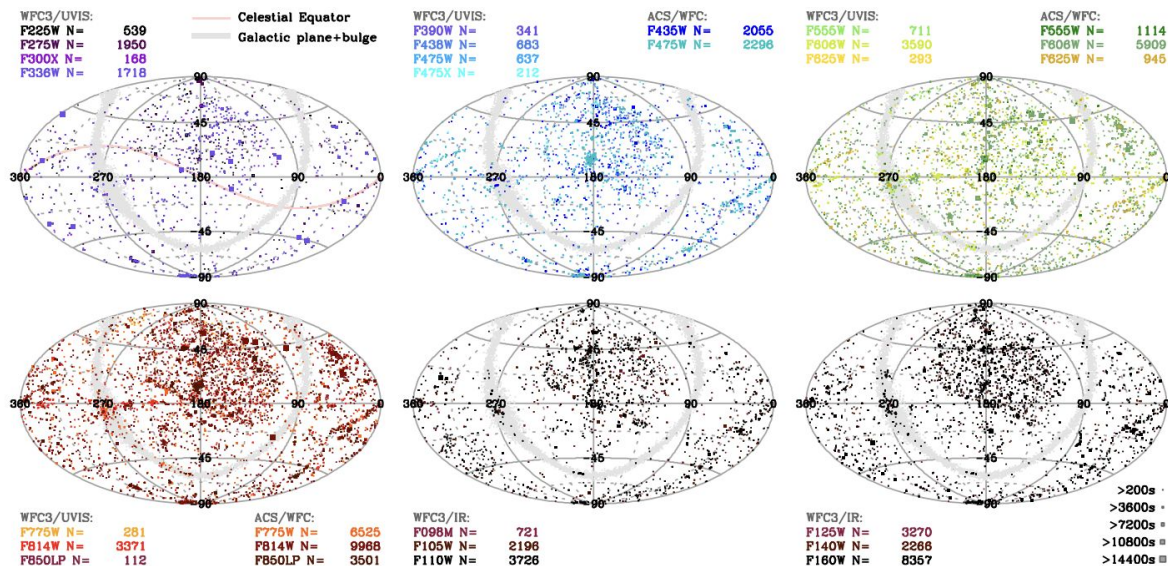
The Optical/IR Background with *Roman*: Lessons from *Hubble* SKYSURF

Timothy Carleton¹, Rogier Windhorst¹, Seth Cohen¹, Rolf Jansen¹, Rosalia O'Brien¹, Delondrae Carter¹, Isabel McIntyre¹

¹Arizona State University

SKYSURF analyzed over
7 sq. deg. of *HST* imaging

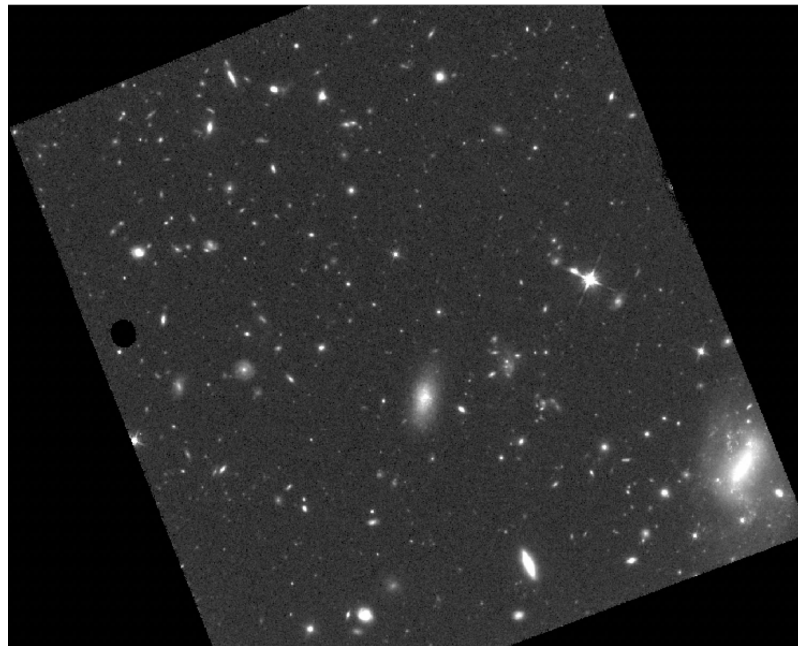
Want a dataset of
space-based imaging in
preparation for *Roman*,
start with *Hubble*!



The Optical/IR Background with *Roman*: Lessons from *Hubble* SKYSURF

SKYSURF analyzed over
7 sq. deg. of *HST* imaging

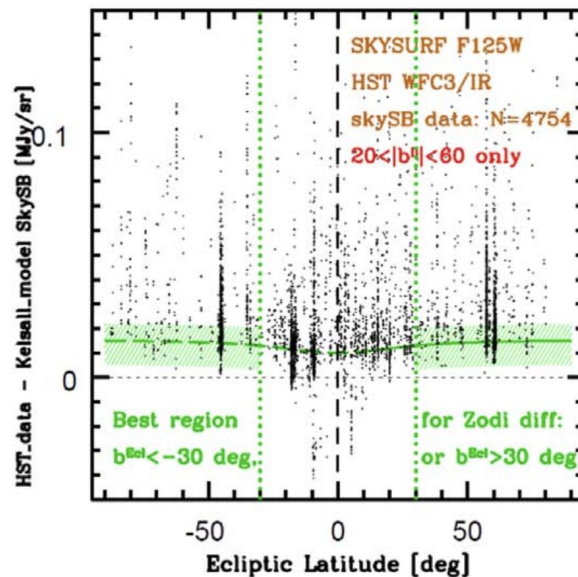
Want a dataset of
space-based imaging in
preparation for *Roman*,
start with *Hubble*!



The Optical/IR Background with *Roman*: Lessons from *Hubble* SKYSURF

Sky background measurements
have useful information

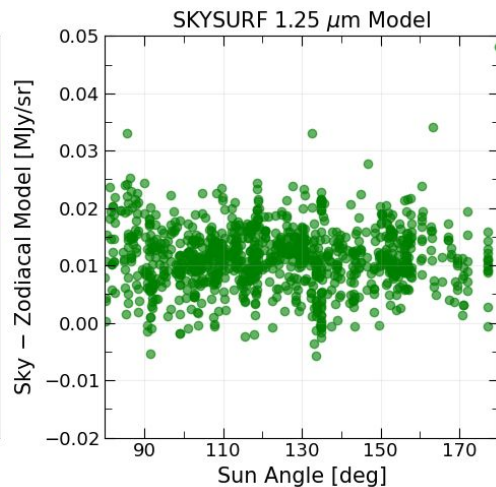
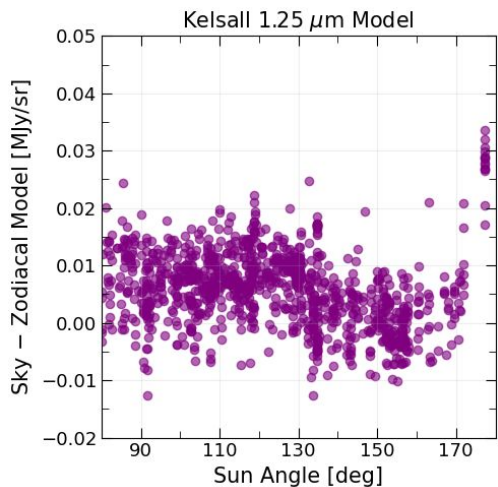
-> constraints on diffuse
extragalactic background light



The Optical/IR Background with *Roman*: Lessons from *Hubble* SKYSURF

Sky background measurements
have useful information

-> improvements on Zodiacal
light modeling



The Optical/IR Background with *Roman*: Lessons from *Hubble* SKYSURF

Sky background measurements
have useful information

-> thermal background
modeling

